



Masonry Chimney Sweeping Procedure

1. Set up the **ladders**,
2. Climb, Remove the Chimney **Cap** (see if chimney is dirty) If not - inspection only
3. Close the **Damper** in the fireplace
4. Set up **vacuum** on runner, put hose into the fireplace (make sure it doesn't land in ashes)



5. **Seal** fireplace opening with a cloth:
 - Use 3ft chimney **rods (or magnets)** for cloth tension
 - (on smaller openings)

Or

- **Metal Tape** the cloth to masonry tightly (on larger openings)



MAKE SURE THE FIREPLACE IS VERY WELL SEALED!!

4. Turn on the **vacuum with hose in firebox**
5. Climb the chimney and **Sweep (Go slow when sweeping alone)**
6. Allow soot cloud to settle in the chimney to perform a **visual inspection**:
 - Check terrakotta tiles for **cracks, gaps, holes**. Take Photos
 - Check the **Crown** for Cracks from water intrusion. Take Photos and measurements of the crown if needed
7. Put chimney **cap** back on
8. Remove the cloth Seal **SLOWLY** (with the vacuum running) fold it and put it outside.
9. Open the **damper SLOWLY**
10. Use **12" Viper brush** and hand brush to Clean the area above the damper and the firebox. **KEEP THE VACUUM RUNNING** and **GO SLOW** to control the dust.
11. **soot** **Open & Close Damper repeatedly to shake out from the damper hinge**

vacuum hose must reach down over the damper plate to remove soot pile - not easy



12. Insert vacuum hose past damper to suck soot from **behind the damper if possible**.

13. **Clean Firebox** - IF POSSIBLE Push all ash and soot in firebox into Ash Dump Opening on the bottom , otherwise scoop it into a plastic bag.

14. **Clean up** the area around the fireplace

15. Leave **FATWOOD** and *WOODBURNING HANDBOOK*

15. **Inform** the Client of any issues found

WELL DONE!

Common Issues to Look For And Solutions to Offer

1. **Damper** - Warped, Broken, Inoperable

EFFECT: House loses heat constantly, bats, mice may enter home even with a cap present, house may smell like soot after a while.

SOLUTION: Top Damper operated with a handle in the firebox, saves energy, assists with starting fires. \$500-\$1000

INFO NEEDED: flue diameter, ease of access to chimney cap

2. Firebox Gaps and Cracks

EFFECT: (fire danger or structural and expensive issues in the future)

SOLUTION:

1. Inject mortar in gaps (works well only on gaps towards the front, not on top or back wall)

2. Inject Sealant similar to 3M™ Fire Block Sealant FB 136. rated to over 1300deg F



2. Stainless or ¼" steel radiant fireback \$200 - \$350

INFO NEEDED: Size of wall needing the shield



3.



Missing Chimney Cap

EFFECT: Water enters and destroys flue tile and chimney structure - freeze/thaw cycle, Animal can enter and nest.

SOLUTION: Stainless Cap w/Spark arrester \$200-\$300 installed

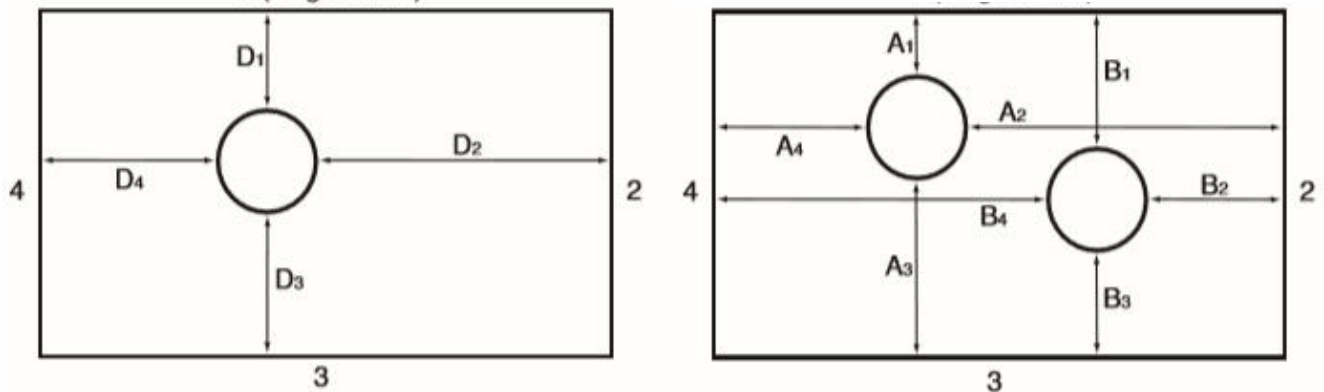
INFO NEEDED: Flue Size, Ease of access to chimney top

4 Crown Damage

EFFECT: falling rock/brick can cause injury, future structural repairs expensive or even impossible.

SOLUTION: Mortar inject, Stainless Steel Chase Cover \$500 - \$1200

INFO NEEDED: Photos and **outer dimensions** of the Crown plus **skirt length** to cover top imperfections (see if some protruding rocks may be cut down to keep cover size tight to minimum). On covers for nicely even crowns with steel chimneys you may need dimensions for the location of the Hole with a collar.



On crowns with steep slope (over 2") you may need to measure the slope height (The difference between highest and lowest point of the crown). That is if you assess that a flat cover would not sit right (lack of support under the corners) and risk deformation over time from the weight of the snow.

Mortar GAPS on outside grout lines.

EFFECT: falling rock/brick can cause injury, future structural repairs expensive or even impossible.

SOLUTION - Tuckpoint = Inject mortar or sealant into gaps (note: new mortar has lighter color than old mortar) \$100 - \$500 and/or Crown Cover as above.



3. **Efflorescence** - white powder on masonry

efflorescence. (ěf'lə-rěs'əns) A whitish, powdery deposit on the surface of rocks or soil in dry regions. It is formed as mineral-rich water rises to the surface through capillary action and then evaporates. **Efflorescence** usually consists of gypsum, salt, or calcite.

- Sign of water intrusion (water escaping masonry leaves the white deposits)

SOLUTION: Salt scrubbed off and Water repellent sprayed on Exterior chimney surface \$250 - \$500

INFO NEEDED: Chimney surface area in sq. ft.

Job cost \$2 - \$2.5 per Sq. Ft. (includes 2 coats)

Manufacturer Warranty 10 years

Our Warranty - ZERO (the chimney usually already suffered water intrusion internally, we can only repel further water from surface absorption, but not undo existing internal cracks that may still allow water in. These cracks can be sometimes filled with sealant, but there is no 100% .

Water-base ChimneySaver is the most popular formula because it can be applied to damp surfaces — no waiting for a dry day. Water-base is non-combustible and has no chemical odor, does not give shine or change chimney appearance.¹

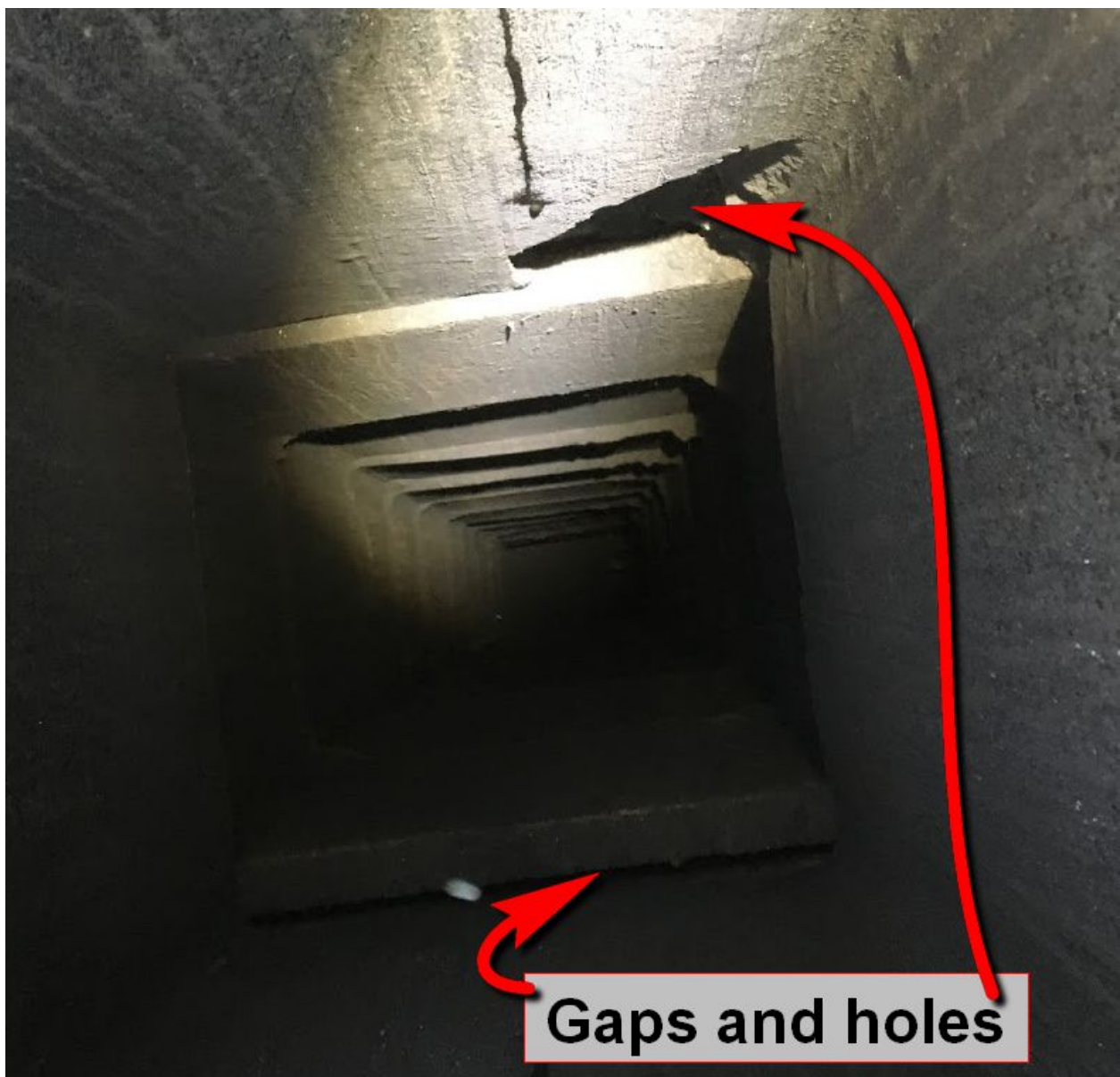


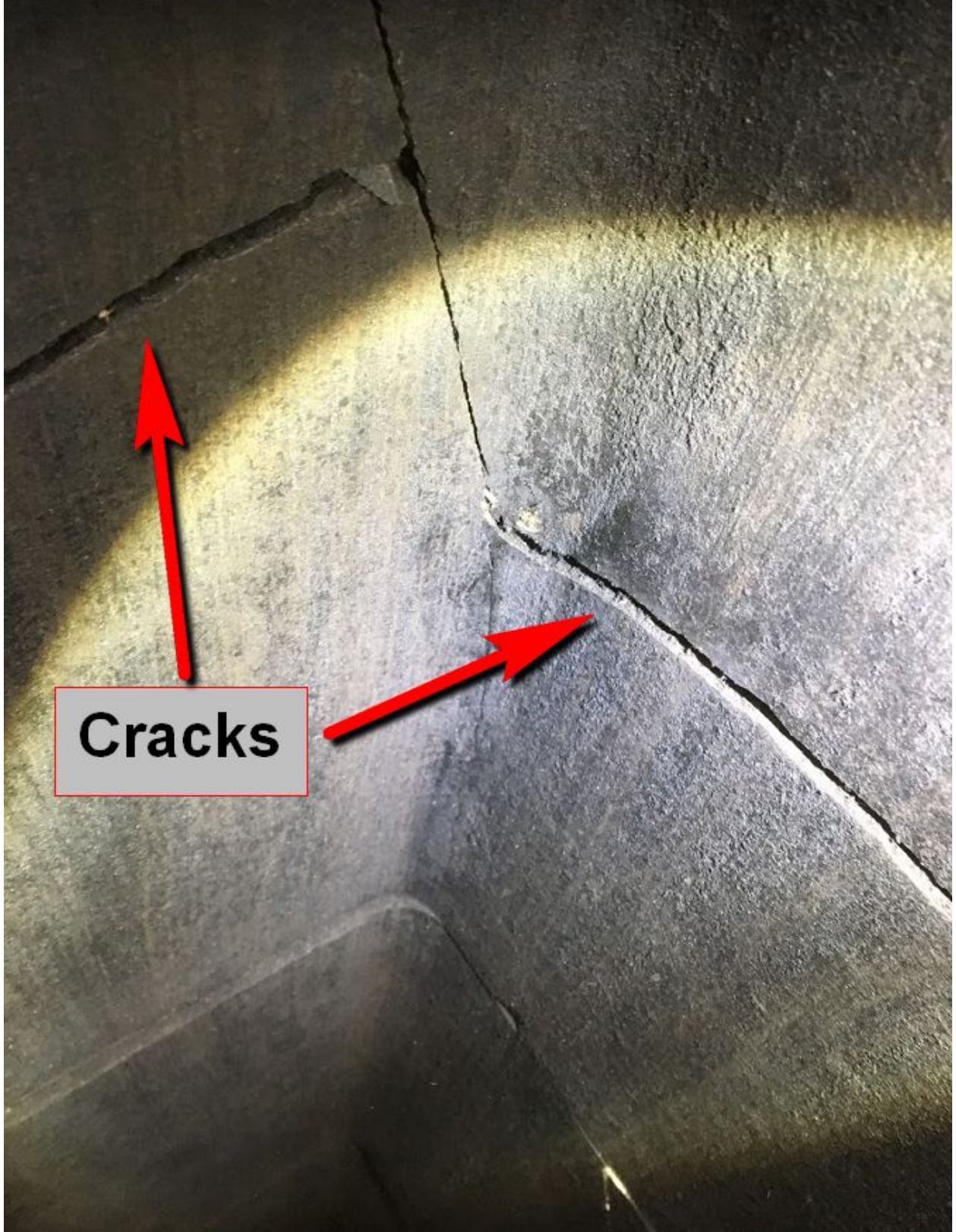
Firebox Screen warped or missing - popping embers can land on carpet or floor and start a house fire.

SOLUTION: New Curtain Sliding Screen \$150 - \$300 installed.

4. **Cracked Flue tiles** - Gaps, Cracks and Offset tiles Can cause house fire via breach (we don't repair these unless they can be easily reached to patch them with Flue Goo Refractory Cement)

SOLUTION: Insert Installation \$3500-\$5000







ALWAYS COLLECT CUSTOMER'S **EMAIL FOR ESTIMATES**